

# DATA CENTRES



The Advantage  
of Clarity

Your data centre is a critical component of support to your business.

The data centre design-construct-operate paradigm is evolving at an ever-increasing rate of change. Addressing this change with conventional data centre thinking and design disciplines restricts your ability to deliver core IT services and ultimately impacts your business.

So, it's critical to get the strategy and design right—not only for your immediate business needs, but also for the future.

## Is your data centre keeping up with the rapid pace of change?

Your organisation needs to consider a bewildering variety of commercial, technical, property and cultural issues when making decisions about the location of your core IT systems.

- Should I outsource my data centre?
- How much do I invest in my production facility?
- Is a disaster recovery site essential?
- Have I met my governance requirements?
- How do I meet environmental sustainability goals?

Many organisations have outgrown their data centre facilities, facing issues such as scalability, security, availability, manageability and reliability. What's more, there is relentless pressure to improve efficiency and to reduce waste. The world's focus on environmental sustainability has put the spotlight on ICT resource management.

The rising demand for data centre services means the resources needed to deliver them aren't keeping pace, with the depth of expertise required rarely available in-house. Planning a data centre requires a degree of proficiency that can only come through experience and expertise.

*Frame translates your business needs into strategic requirements to assist you in designing, relocating, constructing or reshaping your data centre. Frame provides integrated design, project management and IT consulting expertise enabling you to exploit the rapidly evolving solutions available within the data centre marketplace.*



## Envisioning a solution to fit your business

Frame translates your business needs into strategic requirements. A set of comprehensive and accurate business requirements forms the foundation of any successful data centre project. Our experience allows us to facilitate discussions across property, technical and business divisions, resulting in a functional brief that accurately reflects your vision.

Frame conducts a review and then works with you to scope floor space, availability and redundancy, layout, power, cooling, security and other requirements.

We develop the framework and migration technology plans for your data centre infrastructure to assess, scope, source and manage contractors and builders, and assist with the vital relocation of equipment and staff.

And Frame can design and build solutions that are engineered to help you meet your environmental sustainability goals and attain a data centre that is realistically and demonstrably green.

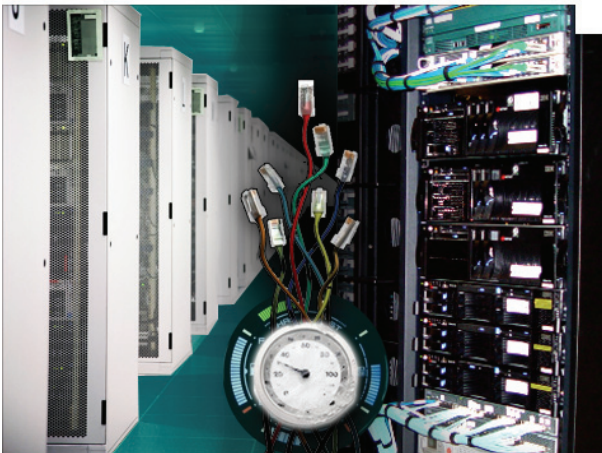
# DATA CENTRE SERVICES

## Make us your trusted adviser

Frame has developed a reputation for on-time and on-budget delivery of complex, high-quality data centre projects.

You benefit from our best-practice knowledge, design skills, engineering support, project management and reporting, to get your data centre up and running on the most sustainable footing.

Frame actively participates in local and international industry forums and user groups. This provides you with a conduit of new ideas and technologies from other data centre professionals. And it enables us to adapt a global perspective to the local environment.



Our data centre services encompass:

## Strategy and planning

- Feasibility studies and project cost budgeting
- Availability and risk assessment
- Options and cost analysis (in-house, outsource)
- Site selection
- Business continuity and disaster recovery planning
- Relocation evaluation and planning

## Design

- Functional brief including functional criteria
- Architectural and engineering design services
- Communications and data cabling design services
- Support infrastructure design services
- Network operations centre design services

## Implementation

- Project management
- Owners representation and superintendency
- Construction management
- Contractor management
- Equipment installation services
- Relocation coordination
- Information technology implementation
- General contracting
- Commissioning

## Operations and maintenance

- Technical support and operations review
- Operations manuals development

### Sydney (Head Office)

Level 11, 189 Kent Street  
GPO Box 4647  
Sydney NSW 2001

**Tel** +61 (0) 2 9323 2800  
**Fax** +61 (0) 2 9323 2828

### Canberra

Unit 9, 25 Buckland Street  
PO Box 224  
Mitchell ACT 2911

**Tel** +61 (0) 2 6122 6800  
**Fax** +61 (0) 2 6122 6868

### Melbourne

Level 7, 31 Queen Street  
Melbourne VIC 3000

**Tel** +61 (0) 3 9927 3800  
**Fax** +61 (0) 3 9927 3838

### Brisbane

Level 1, 21 Mein Street  
Spring Hill QLD 4000  
GPO Box 2502  
Brisbane QLD 4001

**Tel** +61 (0) 7 3009 7800  
**Fax** +61 (0) 7 3009 7878